



RAW DESIGN LIMITED

ZWCAD 2011 INSTALLATION & SETUP GUIDE

UPDATED 17 JANUARY 2011

CONTENTS

INTRODUCTION.....	3
ABOUT RAW DESIGN	3
ABOUT THIS GUIDE	3
INSTALLING ZWCAD	4
SOFT KEY ACTIVATION	8
ACTIVATING YOUR TRIAL VERSION	8
USING THE LICENSE MANAGER	10
RETURNING A LICENSE	10
STANDARD SETUP	12
STANDARD SCREEN FEATURES	12
Menu Bar	13
Standard Toolbar	13
Properties Toolbar	13
Drawing Tabs.....	13
Model & Layout Tabs.....	13
Command Bar.....	13
Status Bar	13
SUGGESTED TOOLBARS FOR 2D DRAFTING	14
Design Centre.....	14
Properties	14
Draw & Modify Toolbars.....	15
SETTING UP TOOLBARS	16
Turning Toolbars On & Off.....	16
Turning On Design Centre.....	18
Locking All Toolbars In Place.....	19
STANDARD SETTINGS	20
Units.....	20
Display Colours	21
Crosshair	22
Selection Pick Box	23
SUPPORT.....	24
ZWCAD GLOBAL SUPPORT	24
Teaching Movies.....	24
Knowledge Base.....	24
Online Support Request	24
ZWCAD Club.....	24
RAW DESIGN LOCAL SUPPORT.....	25
Email admin@rawdesign.biz	25
Skype kimhore	25
Phone 0800 NZ ZWCAD.....	25
Remote Assistance.....	25

INTRODUCTION

ABOUT RAW DESIGN

Raw Design is a Mechanical Consultancy based in Central Otago. We initially came across ZWCAD when we were looking to purchase drafting software for our own business. We were sure there must have been an alternative to AutoCAD that would allow smaller businesses, such as ourselves, to purchase drafting software for a reasonable price.

We've never looked back! In fact we liked it so much we decided to become the New Zealand distributor to give others the opportunity to purchase CAD when it otherwise would have been out of their price range.

Because we come from a drafting background we pride ourselves on providing comprehensive support, so if you are looking for reliable CAD software and somewhere to turn when you need a hand you've come to the right place. Give me a call - I look forward to hearing from you.

Happy Drafting!



Kim Hore
Raw Design Limited

Raw Design[™]
Mechanical Design & Drafting



ABOUT THIS GUIDE

This guide has been created to assist you in getting your ZWCAD software up and running. It will walk you through installing and activating your ZWCAD software, using the license manager, and also setting up toolbars to a standard screen layout ready for drafting. Remember, if you need further assistance at any time feel free to get in touch - we're here to help.

This guide may be reproduced as many times as you like as long as you acknowledge us.

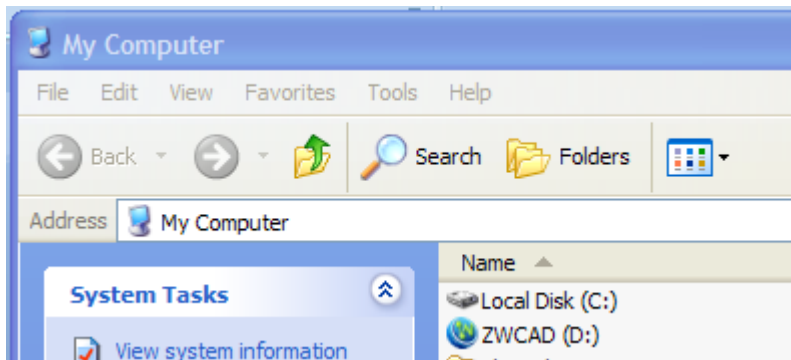
© Copyright Raw Design Limited 2011

INSTALLING ZWCAD

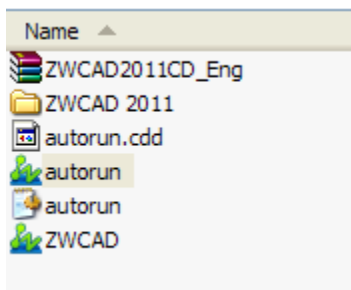
If you don't have a ZWCAD CD you can download a trial version from here :

http://www.zwcad.org/products_detail.php?id=117

- Insert the **ZWCAD CD**
- If AutoRun does not commence open your CD drive using **My Computer**



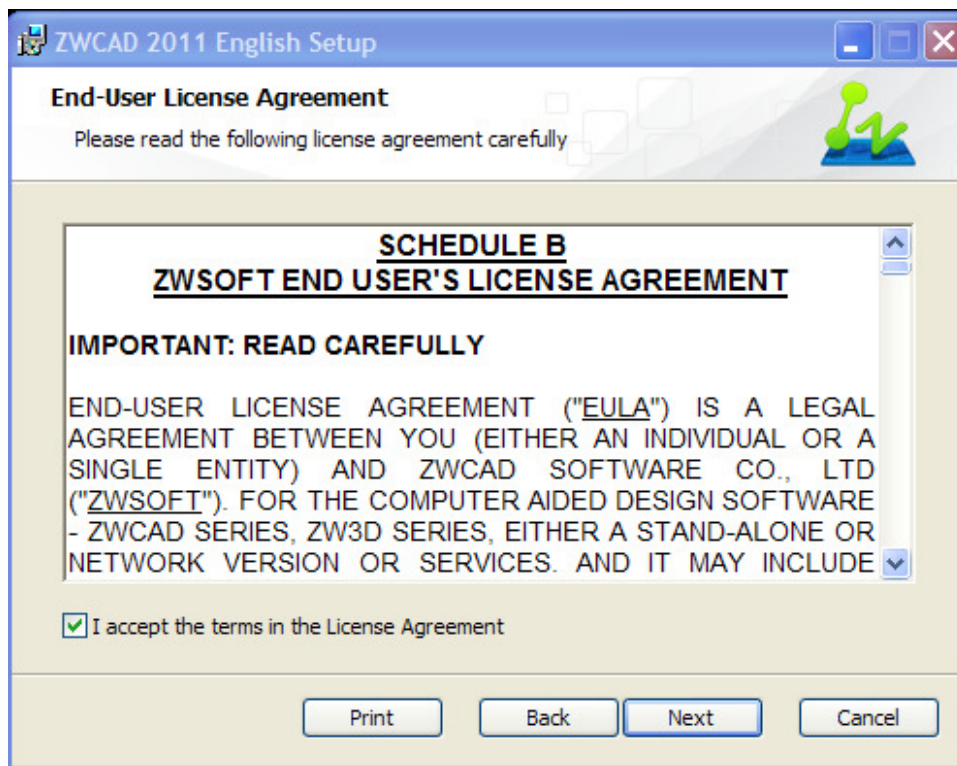
- Double click the **Autorun** application



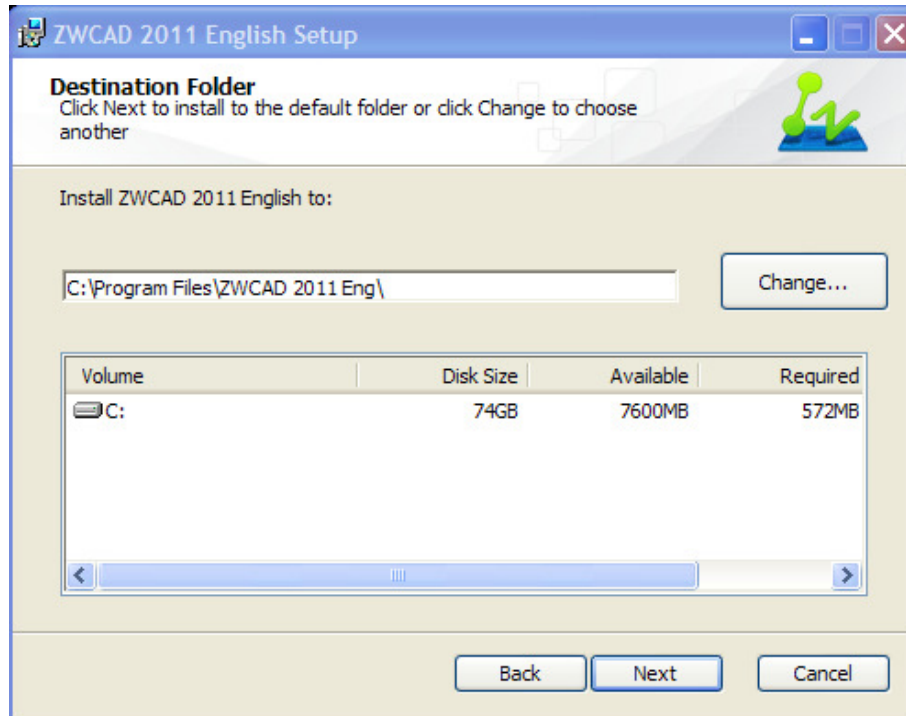
- Click **Next**



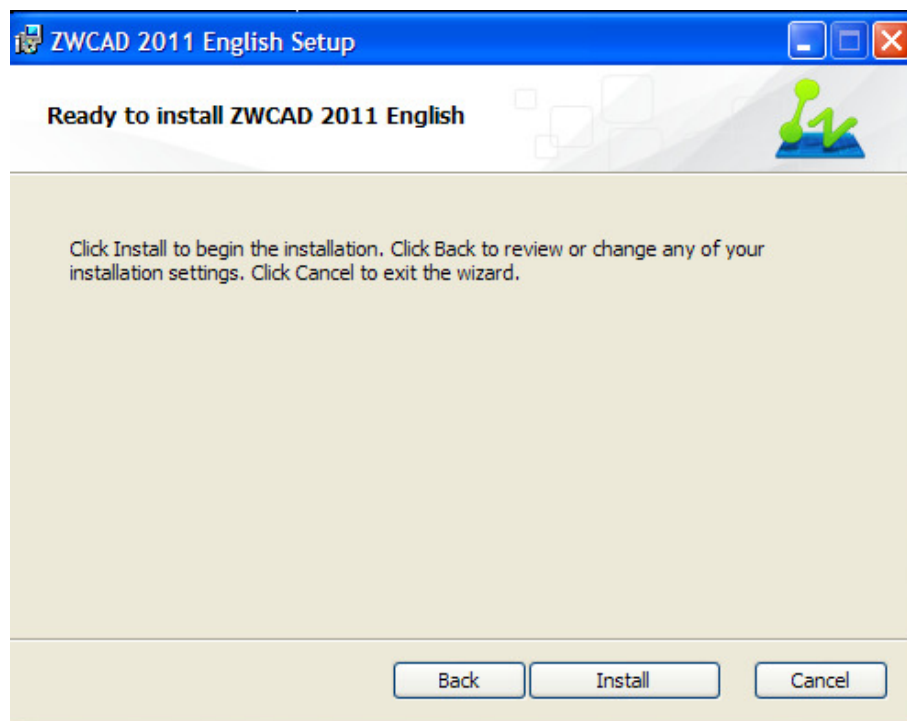
- Read and accept the agreement by **Ticking the Box** then click **Next**



- Choose the installation destination and click **Next**



- Click **Install** to begin the installation



- Click **Finish** to complete the installation



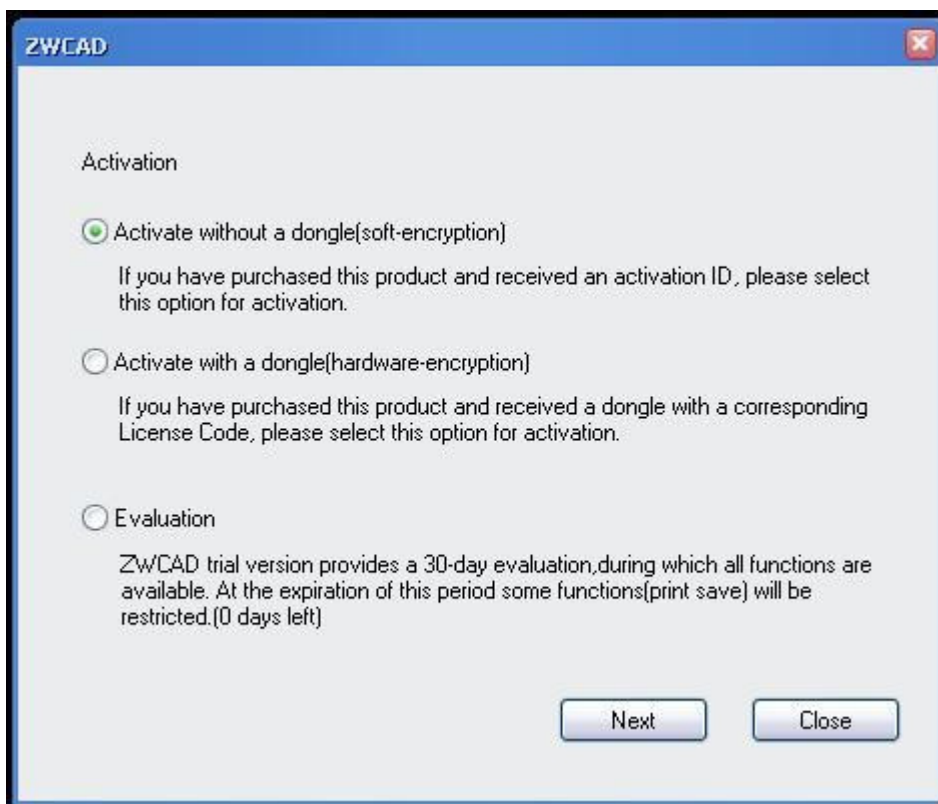
Your ZWCAD software is now installed.

SOFT KEY ACTIVATION

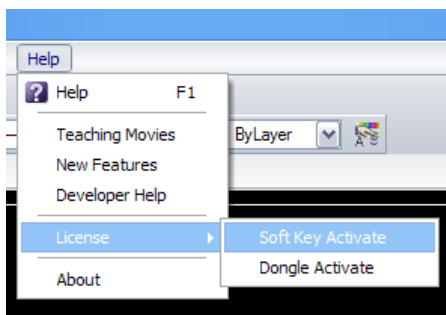
ACTIVATING YOUR TRIAL VERSION

You can activate your trial version of ZWCAD straight away - it doesn't matter if it has already expired.

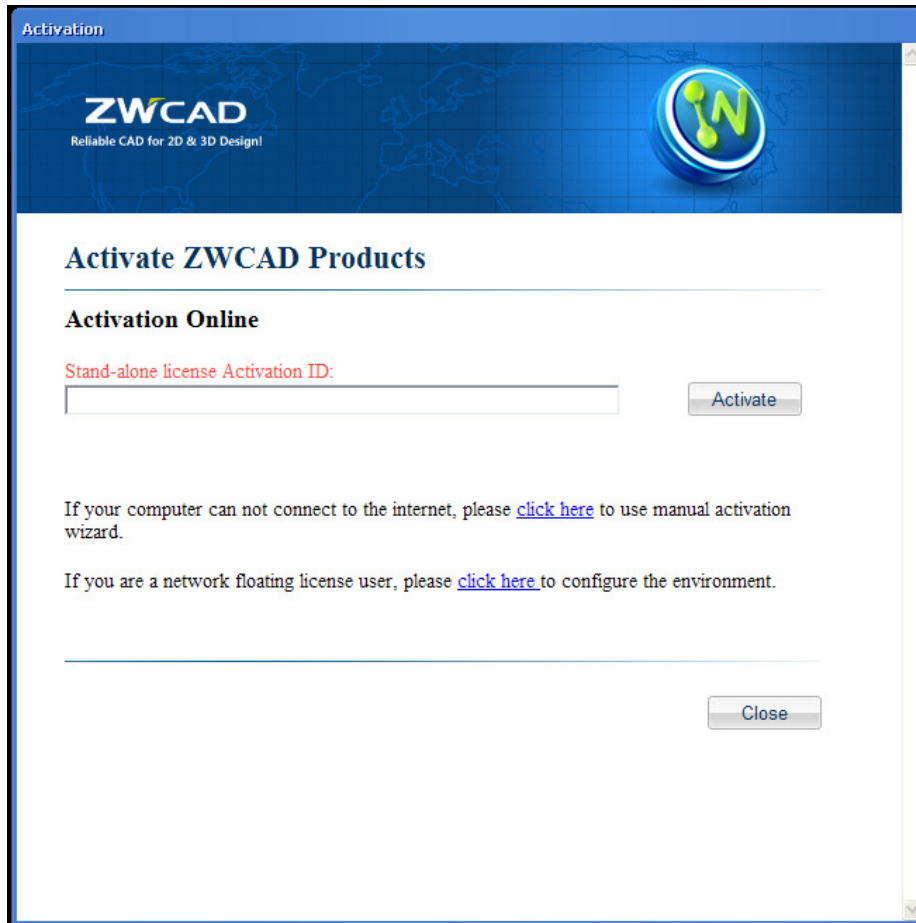
- Open **ZWCAD**, a box will pop-up
- Click the top Activation option for soft-encryption



- If you do not see the box go to **Help > License > Soft Key Activate**



- Type your **Activation Code** into the box and click on **Activate**



Your ZWCAD Software is now activated.
(If you don't have an internet connection please contact us)

USING THE LICENSE MANAGER

The License Manager can be used to return your license so you can use it on another computer, or for returning your current ZWCAD license to install ZWCAD 2011.

Using the same License on a different computer

Starting with the computer that is currently running ZWCAD, return the license using the instructions below then on the new computer follow the "Activating your Trial Version" instructions above.

Upgrading to ZWCAD 2011

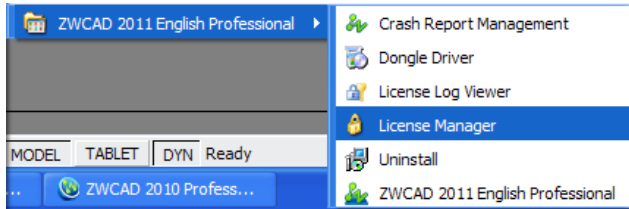
Firstly install ZWCAD 2011, then follow the instructions below to return your current ZWCAD license. You can now use your 2011 Activation Code to activate both ZWCAD 2011 and your old ZWCAD so you are still able to use both versions of the software.

RETURNING A LICENSE

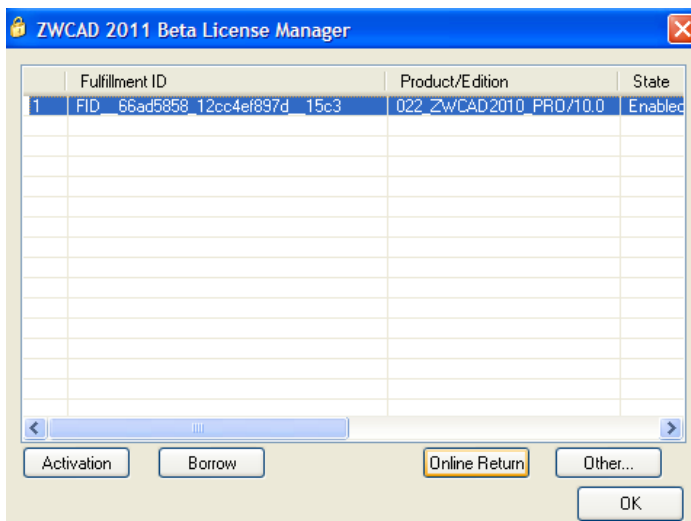
- Click on **Start > All Programs > ZWCAD 2010 > License Manager**

or

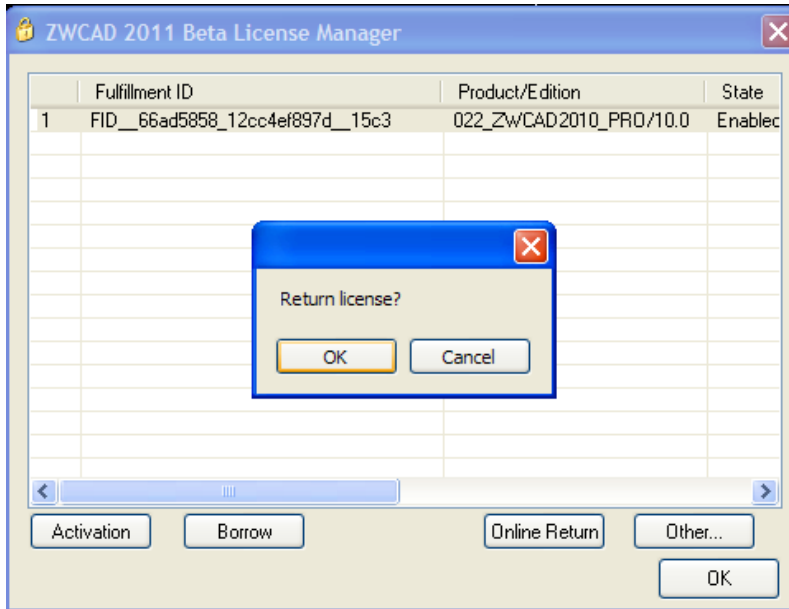
- Click on **Start > All Programs > ZWSOFT > ZWCAD 2011 > License Manager**



- Select the License and click **Online Return**



➤ Click **OK** to return the license

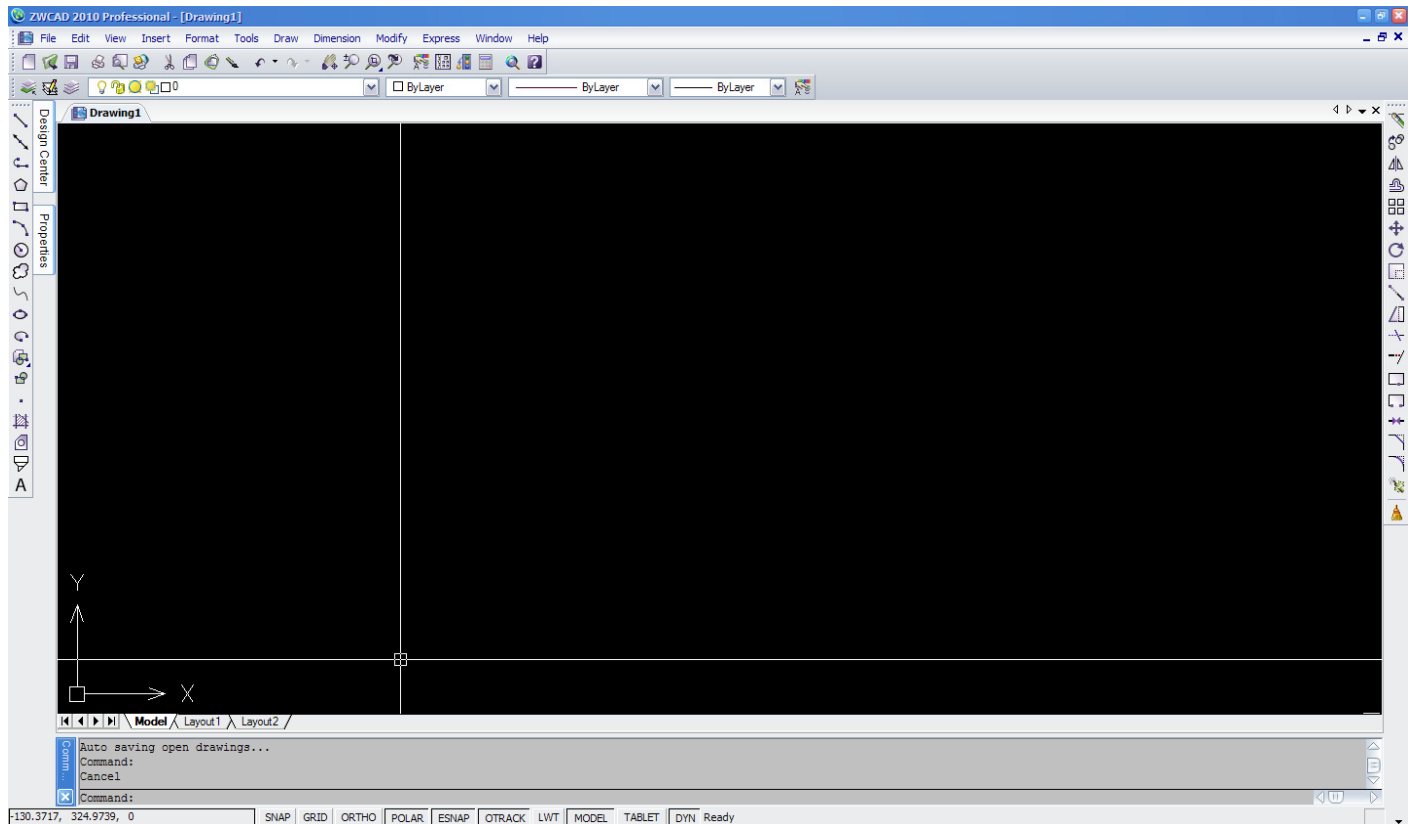


A message will pop-up saying your return was successful.
(If you don't have an internet connection please contact us)

STANDARD SETUP

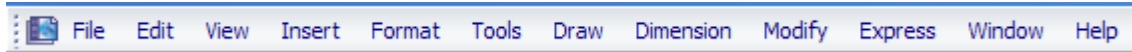
STANDARD SCREEN FEATURES

The screen layout in ZWCAD can be arranged in many ways to suit your personal preferences and type of drafting. The following is an example of a basic screen layout for 2D drafting.



The appropriate toolbars are laid out in such a manner for ease of drafting while also maximizing screen space. The following list names each toolbar shown in the above screenshot.

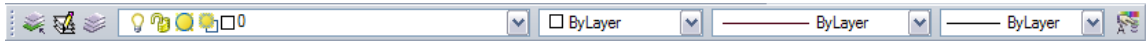
MENU BAR



STANDARD TOOLBAR

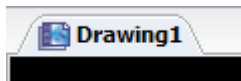


PROPERTIES TOOLBAR



The properties toolbar displays the layer, colour, linetype and linewidth of a selected entity.

DRAWING TABS



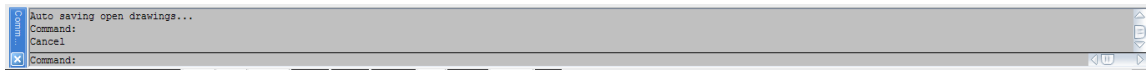
The drawing tabs display all open drawings making it easy to switch between them.

MODEL & LAYOUT TABS



The Model Space is where your drawing will be located. It is not bound by page size and generally everything should be drawn to scale. The Layout Space, also known as Paper Space, is where you set your drawings up on page sizes, such as A3, to how they will look when printed. The tabs allow for quick switching between Model and Paper Space.

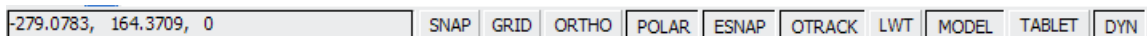
COMMAND BAR



The command bar follows everything that happens in the drawing, much like a log. However it also does much more than this as commands can be typed straight into the Command Bar. This can be much faster than finding and clicking on toolbar icons. You don't have to click in the Command Bar before typing, the cursor is always ready.

Note that if Dynamic Input is turned on (as shown below by the DYN symbol in the Status Bar) the current text will show up beside the cursor instead of the Command Bar. This can be advantageous as Command suggestions will show up as you type. To select a suggestion simply click it, or to scroll through the list use the bar on the right or the down arrow.

STATUS BAR

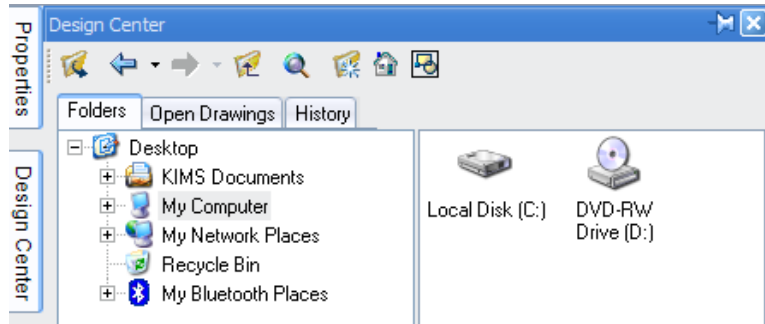


Shows cursor coordinates on the left, and draft settings on the right. These can be toggled on and off by clicking the buttons.

To alter the settings for Snap & Grid, Object Snap, 3D Settings and Polar Tracking right click on any of the Snap, Grid, Polar, Esnap, Otrack or Lwt buttons then click settings.

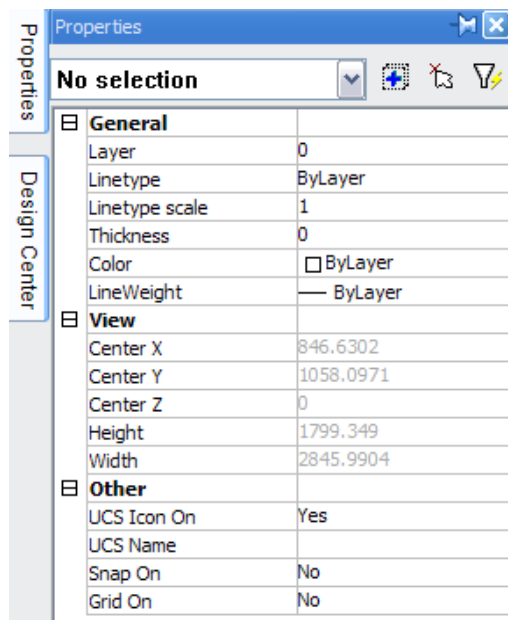
SUGGESTED TOOLBARS FOR 2D DRAFTING

DESIGN CENTRE



Design Centre is a very useful tool that enables items and settings from other drawings to be easily loaded into the current drawing.

PROPERTIES



This is where all the properties of a selected item are displayed. If a group of entities are selected the group can be narrowed down by type using the drop box.

DRAW & MODIFY TOOLBARS

Draw Toolbar



The Draw toolbar shows common drafting tools such as line, circle, polygon, text, hatch etc.

Hover the cursor over each icon in the toolbar to show a name pop-up on screen. Once you have activated a tool remember to keep an eye on the command line as it will provide prompts of what is required through each step of the process.

Modify Toolbar



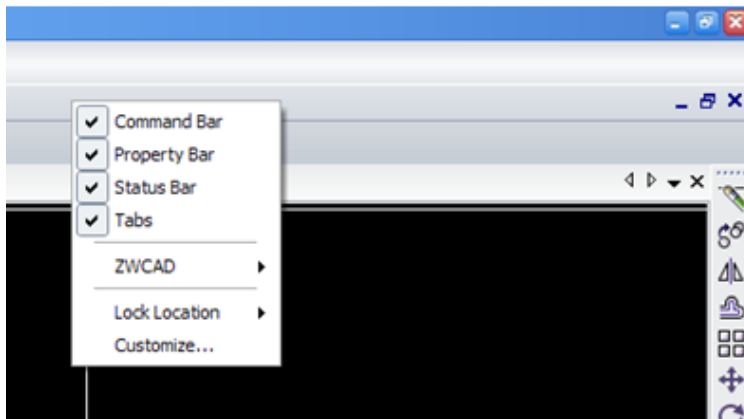
The Modify toolbar shows tools such as erase, mirror, rotate, offset etc.

SETTING UP TOOLBARS

The Menu Bar and Model & Layout Tabs will show up automatically. To set up the rest of your screen layout you need to know how to turn toolbars on and off.

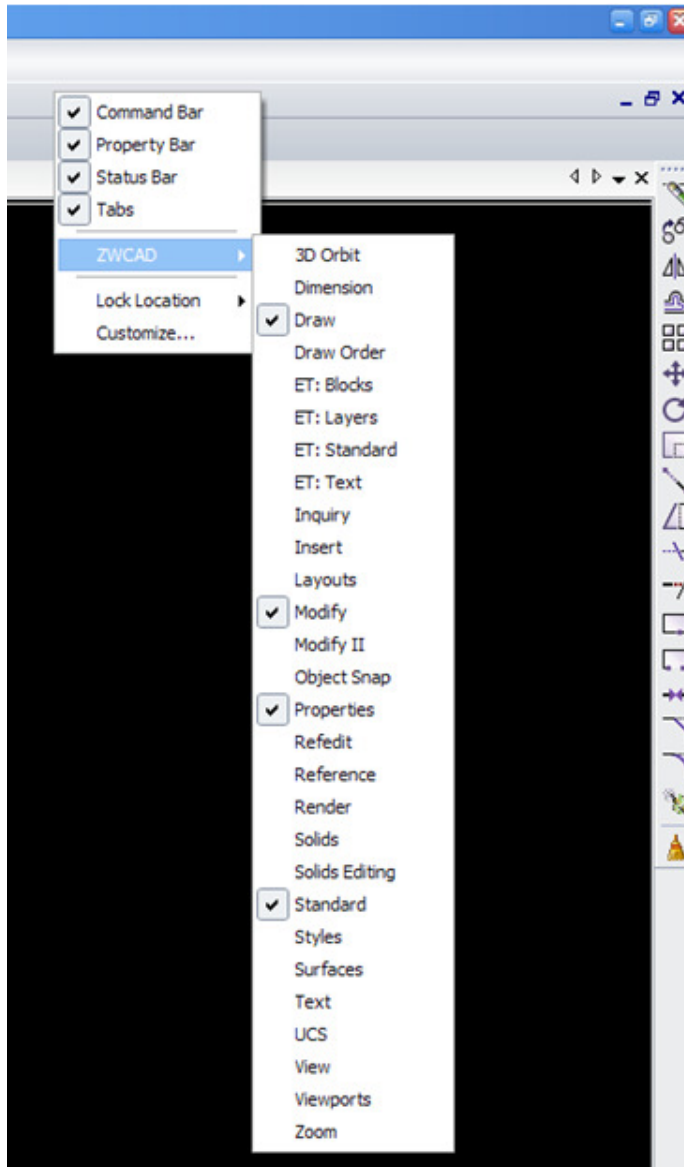
TURNING TOOLBARS ON & OFF

- Right Click in the darker grey area to bring up the **Toolbars Menu**
- Check that **Command Bar, Property Bar, Status Bar & Tabs** are ticked



- Move your cursor down to **ZWCAD** to show a further list of toolbars

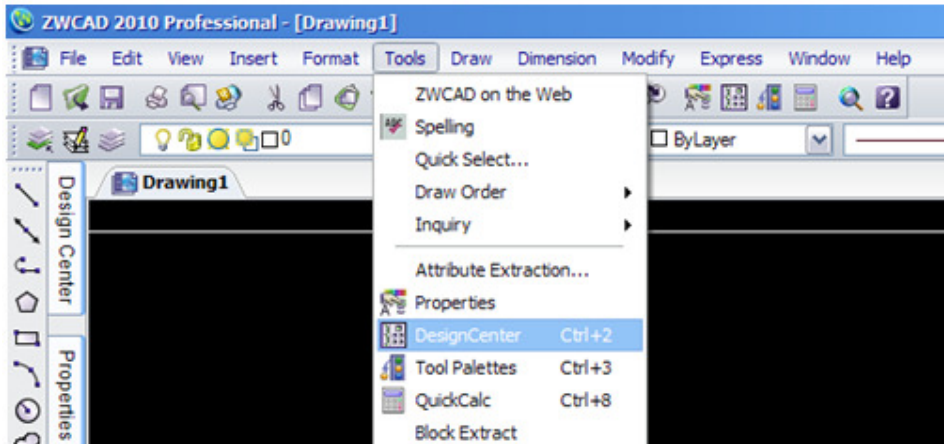
- Tick **Draw, Modify, Properties, and Standard** as shown



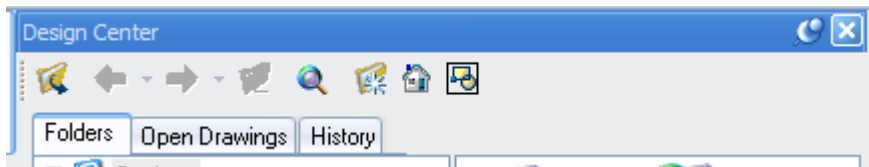
- Now that all your toolbars are turned on simply click anywhere along the blue line of each toolbar to **drag and drop into place**

TURNING ON DESIGN CENTRE

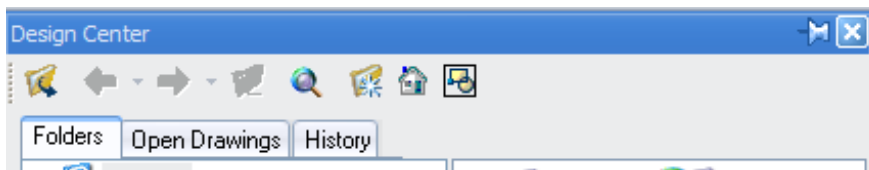
- Click on **Tools** in the menu bar and then **Design Centre**



- To **locate Design Centre** click on the blue bar along the top then drag. A series of blue arrows will show up on your screen, a group in the middle and one on each side. Simply drop the toolbar on to one of these arrows to align to that position.
- Once in place Design Centre may stay on screen and not Auto-Hide if the thumbtack icon is activated as shown below.



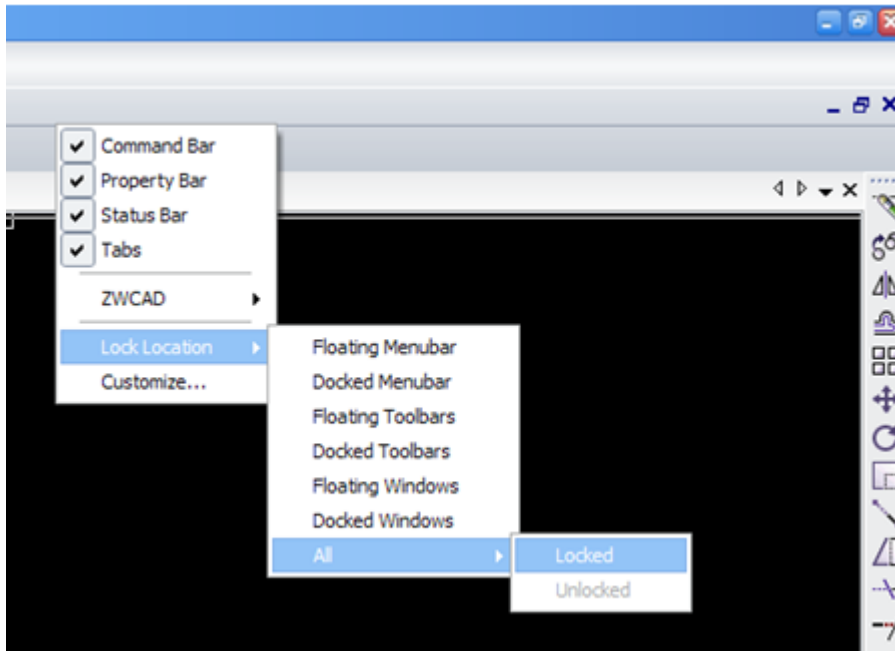
- Click on the thumbtack to toggle Auto-Hide on and off. Design Centre will now only pop out when the cursor is hovered over it



LOCKING ALL TOOLBARS IN PLACE

Now that the appropriate toolbars are turned on and in place it is recommended these are locked. This way they won't be moved or turned off by accident while you're drafting. If you would like to re-arrange them at any time simply follow these instructions and click on Lock Location>All> Unlocked.

- *Again right click in the grey area, move the cursor down to **Lock Location>All>Locked***



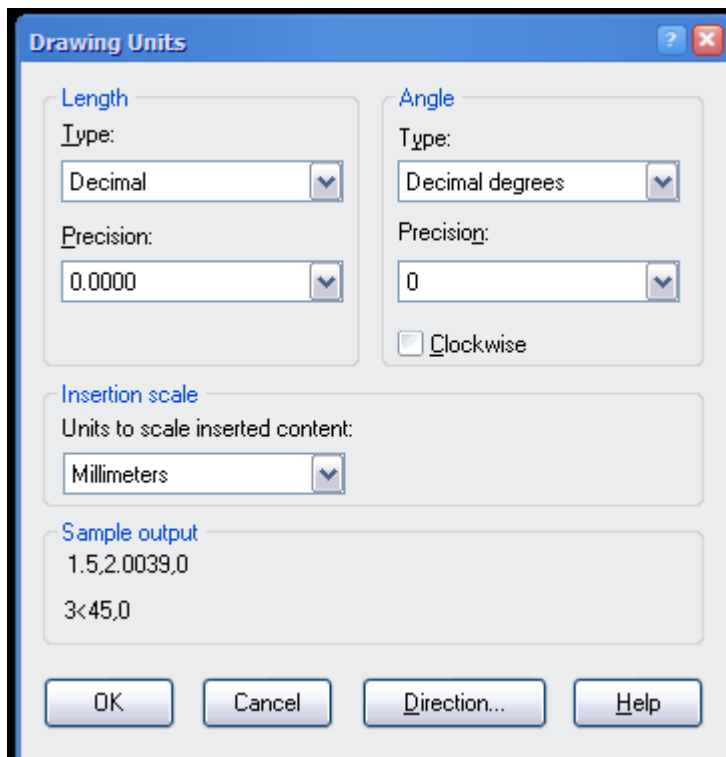
STANDARD SETTINGS

There are a few background settings to check before you start drafting.

UNITS

This command sets the units for your drawings.

- Type **Units** into the command line, or click on **Format>Units**

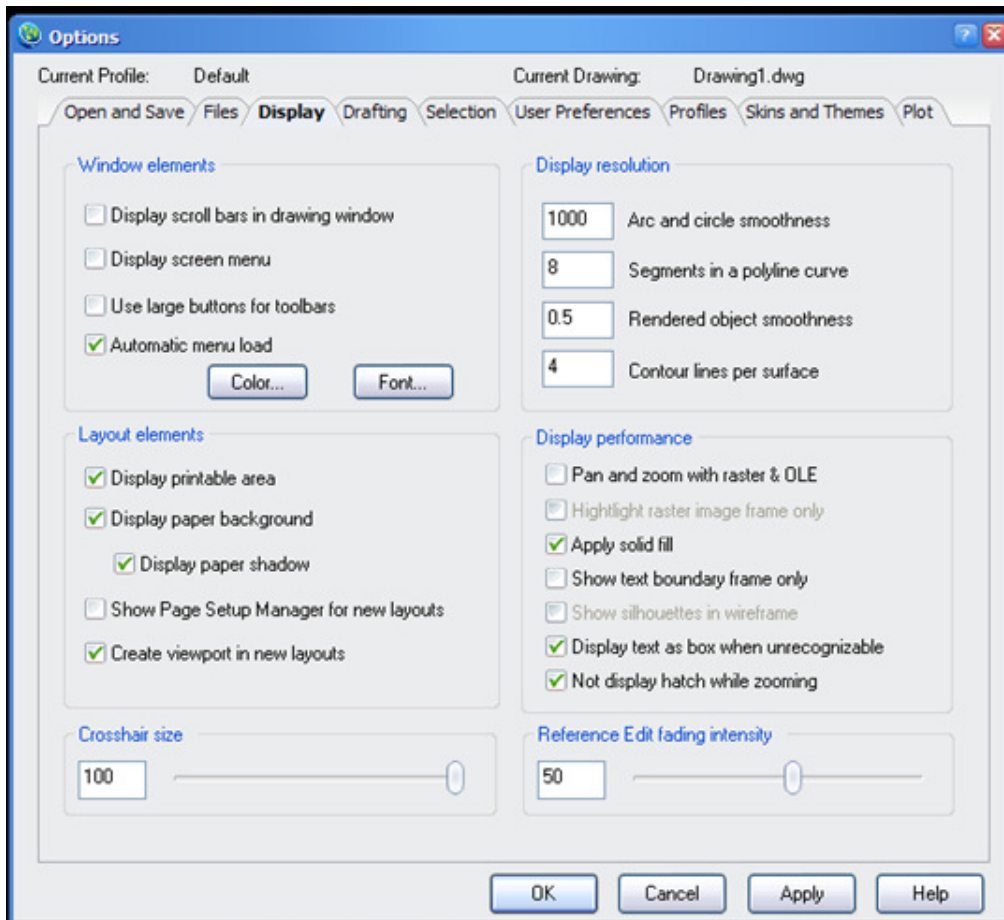


- Select the **Units, Type & Precision** suitable for your drawings

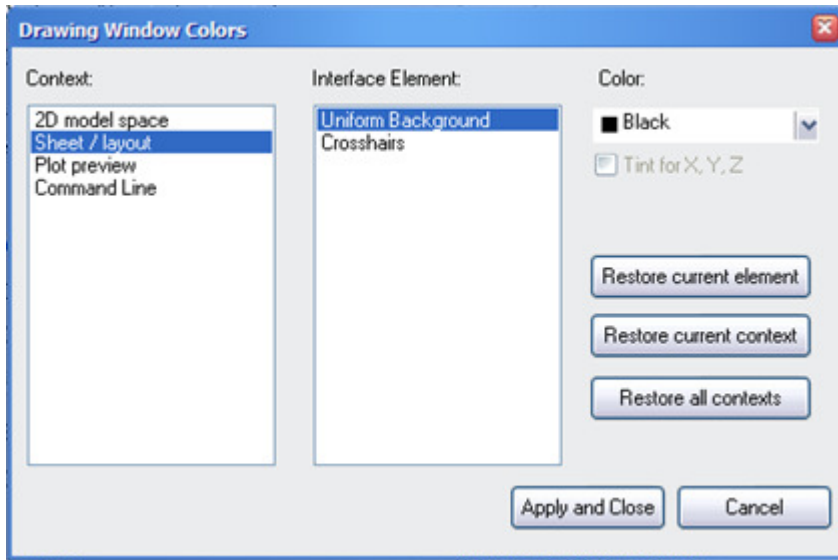
DISPLAY COLOURS

The background colours can be altered to suit your personal preferences. I prefer the following settings as I find them much easier on the eye than looking at white. It is also much easier to see lines drawn as the contrast is greater on a black background.

- Type **Options** into the command line, or click on **Tools>Options**



- Click on **Colour**



- Change the Uniform Background colours of the following:
- Both 2D Model Space & Sheet/Layout to Black
- Make Plot Preview White
- Make Command Line Colour 9
- Click Apply & Close
- Leave the Options>Display box open for the next task

CROSSHAIR

The crosshair can be much more useful when it is full screen size, again this is a personal preference.

- From **the Options>Display** box slide the Crosshair Size cursor to 100%

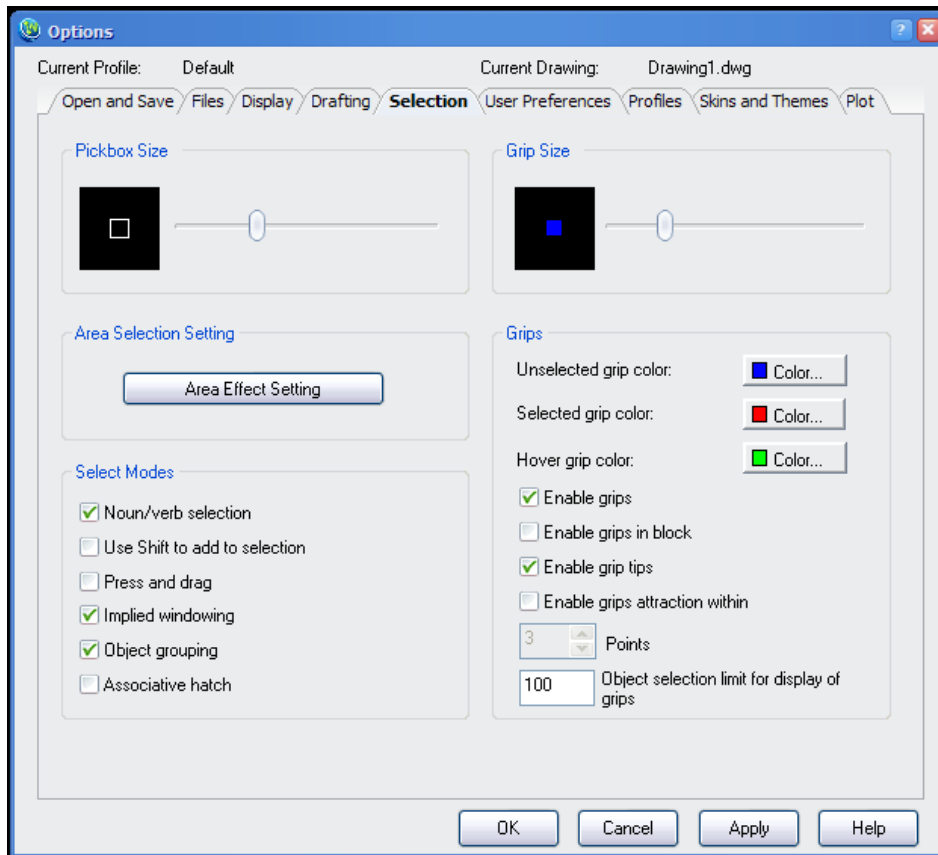


- Leave the Options>Display box open for the next task

SELECTION PICK BOX

The Pick Box is what you will select items with. Once you have begun drafting you may find the size too small making selection difficult, or too large making your selections inaccurate.

- From the Options box click on the **Selection** tab



- The size of the Pick Box can be altered using the slider

That's it for the installation and set-up guide. I hope you found it useful and are now up & drafting.

SUPPORT

ZWCAD GLOBAL SUPPORT

www.zwcad.org/support.php

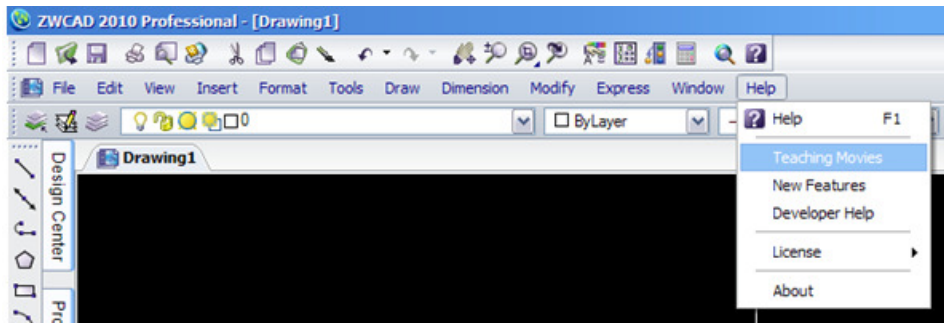
ZWCAD Global Support can be found on their webpage under the Service & Support link.

TEACHING MOVIES

www.zwcad.org/support.php?id=3

The teaching movies can be found at the above address or under Help in ZWCAD.

➤ Click on **Help>Teaching Movies**



KNOWLEDGE BASE

www.zwcad.org/knowledge.php

This webpage allows you to type in a term to search, or look for answers in the knowledge base.

ONLINE SUPPORT REQUEST

www.zwcad.org/support_request.php

If you are still having trouble you can contact ZWCAD Technical Support by filling out the form on this webpage.

ZWCAD CLUB

www.zwcadclub.com

The ZWCAD Club is an online community. Once an online account is created the forum can be used to communicate with other CAD users.



RAW DESIGN LOCAL SUPPORT

www.rawdesign.biz/zwcadsupport.htm

Our Comprehensive Support is detailed on our website.

EMAIL ADMIN@RAWDESIGN.BIZ

www.rawdesign.biz/contact.html

We can be contacted via our website form or emailed directly.

SKYPE KIMHORE

Kim is available via Skype chat. If you just have a quick question this can be the most efficient way of getting back on track.

PHONE 0800 NZ ZWCAD

If you are still having trouble, would like something walked through step by step, or just prefer to talk to someone in person feel free to give us a call.

REMOTE ASSISTANCE

By remotely accessing your computer we can assist you immediately without the need for the time and cost of travel. We simply email a link which once clicked to confirm, a remote assistance session can be started within a few minutes. We will be able to see your screen, control the cursor and solve any issues as if we were working on your computer directly!